

**TIGER**®

**game.com**  
INTERNET

7152981 IWTIE-01  
MODEL 71-529

game.com™

## CONTENTS

Introduction	3
Connecting the Hardware	4 -- 5
Getting Online	6 -- 11
Delphi Special Offer	12
Defective Cartridges	13
Warranty	13 -- 15

## INTRODUCTION

Now the world of the Internet is simply a touch away! This Internet Cartridge and cable let you connect game.com to an external modem (not included) and your telephone line to access text-based Internet and e-mail services.

You may send e-mail to any e-mail account, whether that account is viewed on another game.com, on a computer or on a TV-based e-mail connection. In addition, your game.com will receive the e-mail other people send to you. All Internet and e-mail services require a subscription to an Internet Service Provider specializing in text-based services. Please note that game.com cannot access graphical web sites. Your interaction with the Internet will be limited to text-based sites and information.

Tiger has established a special relationship with Delphi Internet Services, Inc. to provide the text-based services which game.com users need. A subscription with a monthly fee is required; please see details below. You're free to subscribe to any other Internet Service Provider in addition to or instead of Delphi. Please ensure, however, that the particular ISP you choose supports text-based services.

## CONNECTING THE HARDWARE

(NOTE: These instructions are for use with Tiger's game.com modem. Using a different modem should still work, but the procedure below will be slightly different. We recommend that you carefully read the instructions that came with your modem.)

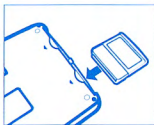
1.



PRESS HERE TO TURN THE  
GAME.COM UNIT OFF.

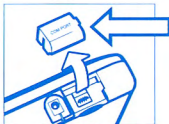
Make sure that the game.com unit is **OFF**.

2.



Insert the Internet Cartridge into cartridge Slot 1.

3.



PULL HERE TO REMOVE  
THE PLASTIC COVER.

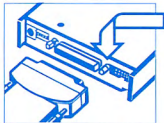
Remove the com.port plastic cover from the  
game.com unit.

4.



Connect the modem cable included to the game.com unit. The smaller end connects to your game.com.

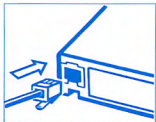
5.



TIGHTEN THE SCREW CONNECTORS ONCE THE END OF THE CABLE HAS BEEN PROPERLY INSERTED.

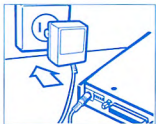
Connect the other end (the larger end) of the modem cable to the modem.

6.



Connect the telephone line to the modem's TEL IN (or IN) jack.

7.



Plug the modem into an electrical outlet.

8.

Turn on the modem.

9.

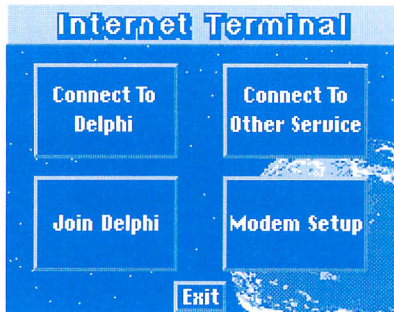
Turn on your game.com system

## GETTING ONLINE

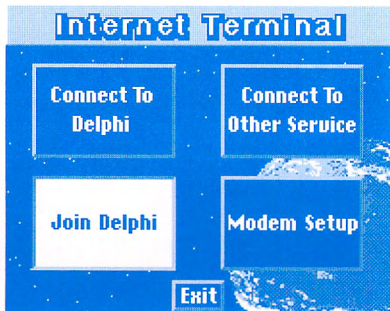
Now that you have properly connected all the hardware, you are ready to begin.

After you have turned ON your game.com system, touch the Cartridge icon on the game.com Main Menu Screen. This will access the Internet Cartridge. You'll see a short animation and then will be presented with five choices:

- CONNECT TO DELPHI
- CONNECT TO OTHER SERVICE
- JOIN DELPHI
- MODEM SETUP
- EXIT



## JOIN DELPHI



If this is your first experience with the Internet, or if you have no current Internet Service Provider, you should touch **JOIN DELPHI**. This will automatically connect you to Delphi, where you'll have the opportunity to sign up for a monthly subscription. Remember that a subscription to an Internet Service Provider which supports text-based access to the Internet is required to go "online" with game.com. Once game.com connects to Delphi, press **ENTER** to advance. The password "**TIGER**" will appear onscreen automatically if the **DELPHI** connection is successful.



THE game.com  
KEYBOARD.

To complete the sign-on procedure you must access the game.com **KEYBOARD**. Do this by touching the **KY** symbol that appears on your screen.



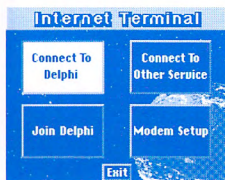
When you have finished entering the information you're prompted for, touch the **ENTER** key. If you need to enter a symbol that is not on the **KY** keyboard, such as "\$," touch **SY** to bring up the **SYMBOL KEYBOARD**. You may switch back to the Keyboard by touching **KY**.

Once you have completed the initial questions from Delphi, you will be given a local telephone number that you can use to connect to Delphi any time from now on. You will be asked to enter a Username and Password. These are very important; we suggest you write them down for future reference. You **WILL** need them later.



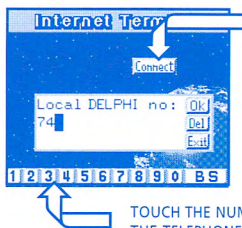
Please note that although Delphi strongly encourages new subscribers to join via their game.com systems, operator assistance for new subscribers is also available at 1-800-255-4129.

## CONNECT TO DELPHI



Once you have completed the **JOIN DELPHI** procedure or if you are already a member of Delphi, touch **CONNECT TO DELPHI** any time you want to sign on.

If you have not entered the local access number that you were given, you must do so now. Touch the numbers at the bottom of the screen. If you make a mistake, touch the BS (backspace) key in the bottom right of the screen to back up. Once you are satisfied with the number, press the **CONNECT** icon to connect to Delphi.

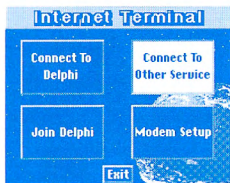


TOUCH HERE  
WHEN YOU ARE  
READY TO  
CONNECT TO  
DELPHI.

TOUCH THE NUMBERS TO ENTER  
THE TELEPHONE NUMBER.

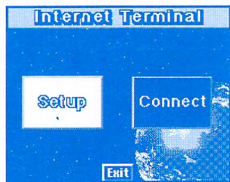
Once you are connected, you will be asked to enter your Username and Password. Enter these using the **KY** Keyboard.

## CONNECT TO OTHER SERVICE



We strongly recommend that you use Delphi when connecting to the Internet via game.com. Delphi specializes in text-based services and has formatted its service especially for game.com users.


But, if you would like to connect to a different ISP, you may do so by touching the **CONNECT TO OTHER SERVICE** icon. You will be taken to a screen and presented with two choices. You may choose to **SETUP** or **CONNECT**.



Touch **SETUP** to enter the ISP's phone numbers. You may enter 2 different phone numbers. When you are satisfied with the numbers, touch **OK**. You may press **EXIT** when you are ready to leave this screen.

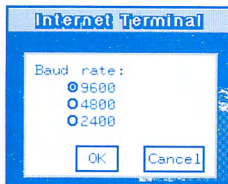
Press **CONNECT** to begin the connection procedure. You must first select which of the two numbers (if, in fact, you stored two) to use. The connection will begin automatically.

If you wish, you may dial the number manually. This is more difficult and requires

additional commands. Once you have selected Manual Dial, you will be taken to the Connection screen. This will appear blank. You must bring up the Keyboard by touching KY. Now enter ATDT followed by the phone number you wish to dial. For example, if you wanted to dial 1-800-555-5555, you would type in the following: ATDT18005555555. You must touch  ENTER after you have finished inputting the telephone number. The connection should immediately take place.

## MODEM SETUP

If you are using the Tiger game.com modem, it's already configured for game.com use, and you don't need to worry about the **MODEM SETUP** option. However, if you are using a modem with a lower connection speed than 9600 baud, you must configure the Internet Cartridge to recognize this. Touch **MODEM SETUP** to go to the Speed Configuration Screen.



The default speed is set at 9600 Baud. If you are using a higher speed modem (for example, 14.4, 28.8, 33.3, 56, etc.) keep this set at the default of 9600. This is the correct setting for newer, higher-speed modems.

If you have a 4800 or 2400 baud modem, touch the small circle next to that number to let your game.com system know what speed you are using. Press OK both to confirm your choice and to leave this screen.

## DELPHI SPECIAL OFFER

game.com users are entitled to a special, no-obligation free trial of Delphi's Internet Services. This offer is good for 10 hours, all of which must be used during the calendar month in which you first contact Delphi. At the end of the special trial, you can elect to terminate service (and be charged nothing), or you can continue using Delphi, thereby becoming a subscriber. Please note that you'll have to select JOIN DELPHI and provide a credit card number to take advantage of this free-trial offer.

## DEFECTIVE CARTS

If you find that your new INTERNET **game.com** cartridge is damaged or non-functional, DO NOT RETURN THE GAME TO THE STORE. The store will not have replacement cartridges.

Instead write to us at:

TIGER ELECTRONICS REPAIR CENTER  
980 Woodlands Parkway  
Vernon Hills, Illinois 60061

Please include a note with your return explaining the problem along with a sales slip, date, place of purchase and price paid. We will do our best to repair or replace your cart promptly.

## 90 DAY LIMITED WARRANTY

Tiger Electronics, Inc. (Tiger) warrants to the original consumer purchaser of this product that the product will be free from defects in materials or workmanship for 90 days from the date of original purchase. This warranty does not cover damages resulting from accident, negligence, improper service or use or other causes not arising out of defects in materials or workmanship.

During this 90-day warranty period, the product will either be repaired or replaced (at Tiger's option) without charge to the purchaser, when returned with proof of the date of purchase to Tiger.

Product returned to Tiger without proof of the date of purchase or after the 90-day warranty period has expired, but prior to one year from the original date of

purchase, will be repaired or replaced (at Tiger's option) for a service fee of U.S. \$10. Payments must be by check or money order payable to Tiger Electronics, Inc.

**The foregoing states the purchaser's sole and exclusive remedy for any breach of warranty with respect to the product.**

All product returned must be shipped prepaid and insured for loss or damage to:  
Tiger Electronics, Inc. Repair Dept.  
980 Woodlands Parkway  
Vernon Hills, Illinois 60061 U.S.A.

The product should be carefully packed in the original box or other packing materials sufficient to avoid damage during shipment. Include a complete written description of the defect, a check if product is beyond the 90-day warranty period, and your printed name, address and telephone number.

**THIS WARRANTY IS IN LIEU OF ALL OTHER WARRANTIES AND NO OTHER REPRESENTATIVES OR CLAIMS OF ANY NATURE SHALL BE BINDING ON OR OBLIGATE TIGER IN ANY WAY. ANY IMPLIED WARRANTIES APPLICABLE TO THIS PRODUCT, INCLUDING WARRANTIES OF MERCHANTABILITY AND FITNESS FOR A PARTICULAR PURPOSE, ARE LIMITED TO THE NINETY (90) DAY PERIOD DESCRIBED ABOVE. IN NO EVENT WILL TIGER BE LIABLE FOR ANY SPECIAL, INCIDENTAL, OR CONSEQUENTIAL DAMAGES RESULTING FROM POSSESSION, USE, OR MALFUNCTION OF THIS TIGER PRODUCT.**

Some states do not allow limitations as to how long an implied warranty lasts and/or exclusions or limitations of incidental or consequential damages, so the above limitations and/or exclusions of liability may not apply to you. This

warranty gives you specific rights, and you may also have other rights which vary from state to state.

If your product is not working properly, or if you have any questions and/or comments, please call us toll-free at 1-888-TIGR-SOS, and a service representative will be happy to help you.



# WARRANTY

GAME.COM is a trademark of Tiger Electronics, Inc.  
©, TM & © 1997 Tiger Electronics, Inc. All rights reserved.

TIGER ELECTRONICS, INC.  
980 Woodlands Parkway  
Vernon Hills, Illinois 60061 USA  
1-888-TIGR-SOS

[www.game.com](http://www.game.com)