

 **MAGNUM**

SUPER
BIG
SCREEN

*MANY EXCITING
GAMES TO
CHOOSE FROM !!*

LR03

AAA

**alkaline
BATTERIES**

[INCLUDES:] EARPHONES

SUPERVISION™

MAGNUM

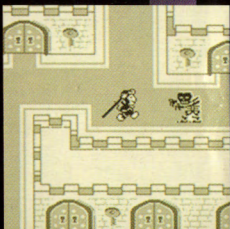


"Journey to the West"





MAGNUM



"Journey to the West"

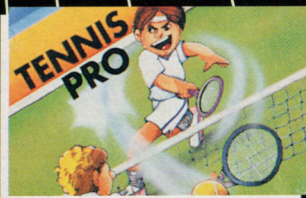
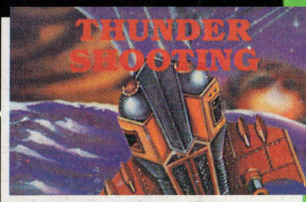


SUPERVISIONTM

PORTABLE VIDEO GAME SYSTEM

SUPERVISIONTM

PORTABLE VIDEO GAME SYSTEM



Only for use on
Supervision Game System

INCLUDES:

- ▶ One console
- ▶ One stereo earphone
- ▶ Four AAA (or LR03) alkaline batteries
- ▶ Instruction manual

Many *&* fun exciting
games to choose from!!

Pending UK Design

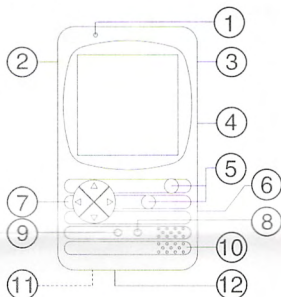
Model No. 9600
Made in China

Not suitable for children less than 36 months.
Some small parts can be removed and might be
swallowed accidentally.
DO NOT USE RECHARGEABLE BATTERIES.




SUPERVISIONTM

SECTION 1



SUPERVISION Features

1. LED Power Indicator
2. Contrast Adjustment (CONTRAST)
3. Volume Dial (VOLUME)
4. External Power Supply Jack 
5. A" & B" Buttons - Please refer to game cartridge instructions.
6. Power Switch (POWER)
7. Direction Buttons
8. Start/ Pause Button
9. Select Button
10. Speaker
11. Battery Cover (back)
12. Headphones Jack (PHONES)

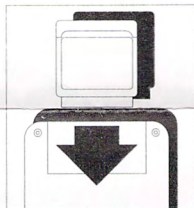
SECTION 2

How to install the batteries?

- Remove the cover on the back of the **Supervision** and insert the four "AAA or LR03" alkaline batteries.
- Make sure that the batteries, plus (+) and minus (-) ends are facing the right directions.
- Do not use rechargeable batteries.
- Do not use mercury oxide batteries.

Important Notice:

- When changing a game cartridge, make sure the power is turned "OFF".
- When inserting a game cartridge into the Supervision slot, make sure that the side with the LABEL faces outwards.
- This unit has been provided with an eight direction key control button for better finger movement on action games.
- For standard games you will be able to control four directions by pushing the four corners of the button only
- Use DC 6V \approx 300 mA \pm center negative external adaptor. For European user, please use the adaptor which complying with CEE Publication 15.
- Precision electrical parts are used in the SUPERVISION. Don't subject the SUPERVISION to strong shock by striking or dropping it.
- Clean off dirt using a soft dry cloth.
- Don't wipe with oil or volatile solvents such as thinner or benzene.
- Drawing the attention of the parents to the fact that any safety isolating transformer to be used with the toy should be regularly examined for potential hazards.



SECTION 3

FAULT	SUGGESTED ACTION
The display is black	Adjust the contrast
The LED is dim	Replace the batteries
No sound can be heard during the game	Check that the game cartridge is inserted properly Adjust the sound volume
There is nothing on the display when the power is turned on	Turn OFF the power, wait for a moment and turn it ON again Adjust the contrast Check that the game cartridge is inserted properly